

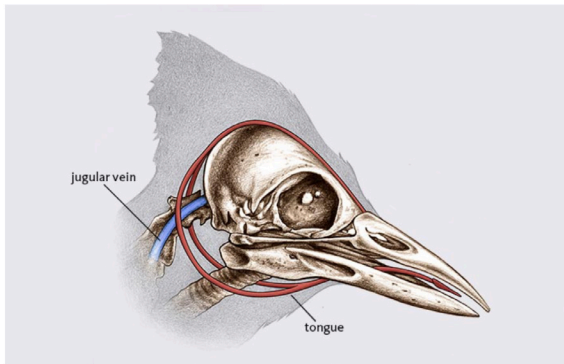
Creature Card #1



Acorn Woodpecker

Michael Oberhofer

- Acorn woodpeckers drill holes in which they stash acorns. Scientists have found “granary trees” with up to 50,000 acorns.
- Many woodpecker species have an extended tongue with a root that wraps completely around the skull. The tongue acts as a shock absorber for the brain.



Dr. Don DeYoung

- Every time the beak strikes a tree, the tongue tightens against the jugular vein, restricting how much blood can flow out of the brain. This mechanism momentarily increases the cushion of blood stored between the brain and skull.



See a live granary tree on NatureTrack's Virtual Trip to Nojoqui Falls @ naturetrack.org Virtual Trips